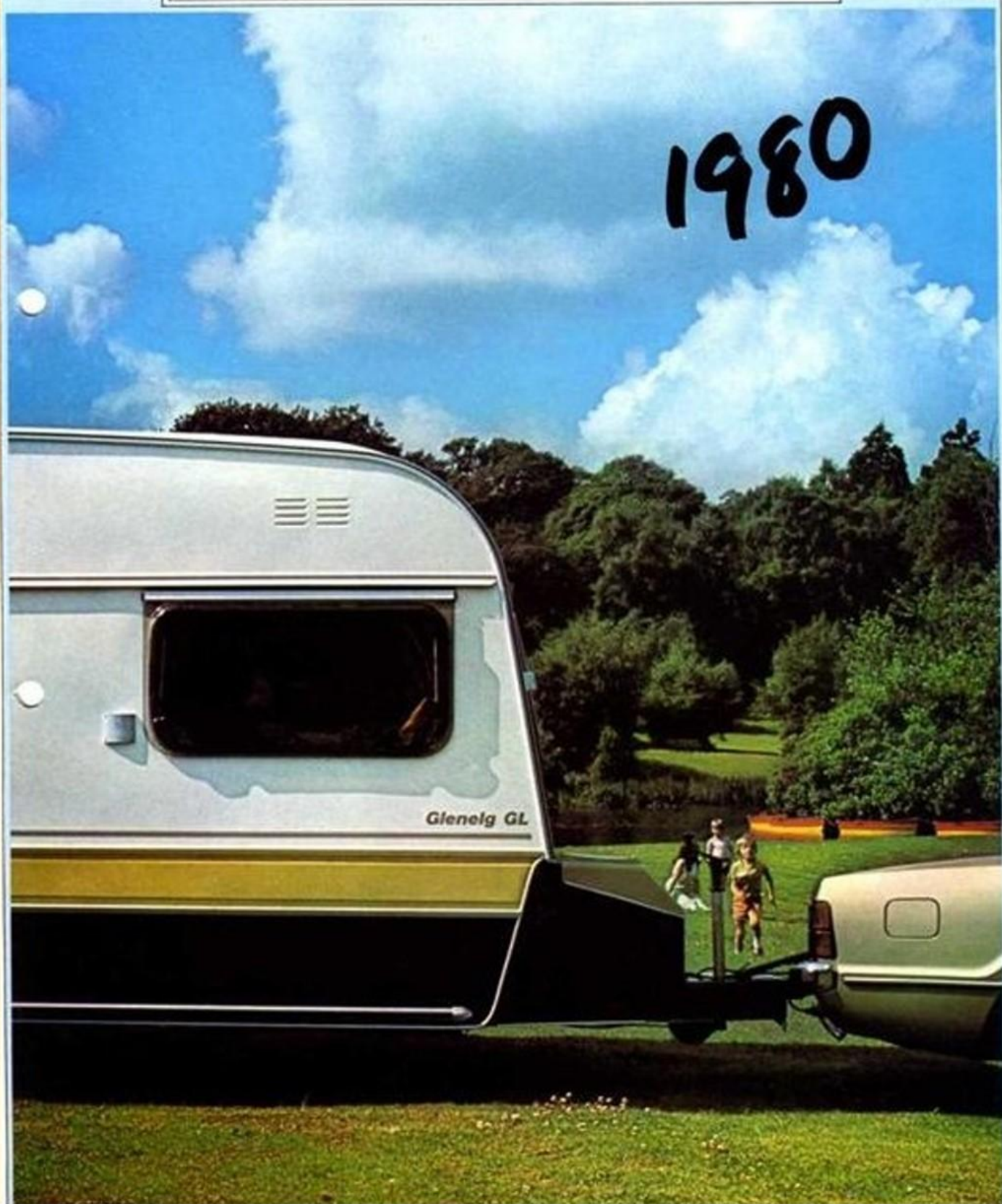


THOMSON T-LINE

A GREAT NAME TO HAVE BEHIND YOU

1980



THOMSON T-LINE



Try to imagine getting together all the necessities of day-to-day living in your home, like your cooker, a couple of beds, a toilet, a refrigerator, a table, some chairs and, of course, the proverbial kitchen sink, and then sticking them all in a space the size of a small kitchen without making it cluttered and uncomfortable.

Doesn't sound easy, does it?

Take our word for it, it's not.

But the problem of making the most of efficient use of available space in caravans, small and large, is one which Thomsons have been successfully dealing with for over half a century.

However, we've a reputation for making our caravans more than just comfortable. They have to be sturdy enough to take the worst of roads. Because we don't expect you to spend your holiday on the motorway all the time.

And they have to be attractive both inside and out. You're going to have to live with it, after all.

By fulfilling all of these requirements year after year, the T-Line range has

established itself throughout the world as one of the foremost in caravan design. With a proven track record at home and in countries like Norway, Sweden, Finland, Denmark, Germany, Holland, Portugal, Switzerland and France. And, even further afield, in Canada, Africa and Japan.

So we aren't boasting when we say that our new range for 1980 is bound to go far.

We've produced a series of seven T-Line caravans this year, both in our standard 'S' and our luxurious 'GL' models. They embody all the features that experienced caravanners expect, and the newcomers to caravanning are glad to find they've got.

The T-Line range is built on sturdy B & B chassis with Sigma coupling assemblies

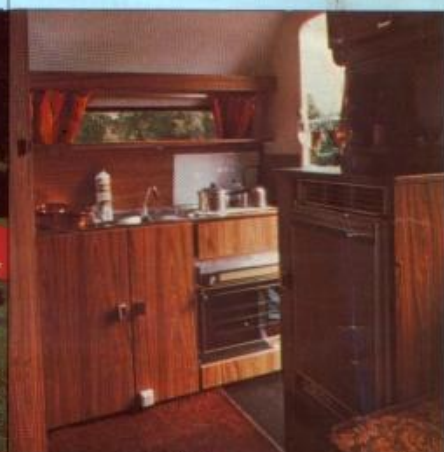
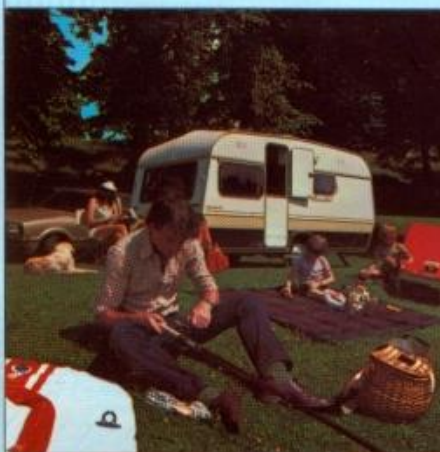
giving maximum manoeuvrability. And with an automatic over-ride brake you'll find a T-Line goes just where you want it to, riding comfortably behind your car with the minimum of 'pull'.

T-Line caravans are equipped for even the worst weather conditions, too, with full 25mm polyester insulation to keep out the cold.

And just in case your holiday weather does prove to be inhospitable, you're sure to be comfortable enough inside.

Standard fittings on both the 'S' and 'GL' models include fully fitted carpets and 5" deep foam mattresses.

And with stainless steel sink unit, an electric and manual water pump, a hotplate and grill, and a toilet compartment with personal washbasin,



there's no reason why you shouldn't be fully self-contained if needs be.

Add to that wipe-easy surfaces, melamine-finished kitchen furniture, tough, hardwearing upholstery, fluorescent lighting and wide-opening, tinted windows and roof lights for more than adequate ventilation, and the T-Line picture is almost complete.

At the top of our range, however, in our 'GL' models, we've gone even further to provide a few added touches of luxury, with double-glazing, a fridge, a flued Carver heater, an oven, lined curtains and an exterior awning light.

A hot and cold water system with shower is also available as an optional extra in the Glendale 'GL' and the Gleneagle 'GL' models.

There's a T-Line to suit every size of family and every pocket. From the amazingly compact Mini-Glen to the spacious luxury of the Gleneagle.

So whether you just intend driving a short distance up the road for a weekend in the country or you're going to some more remote part of the world, make sure you take a caravan you can rely on always. T-Line.

It's simply a great name to have behind you.



MINI GLEN

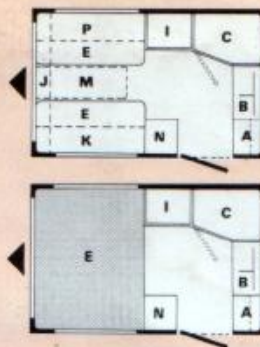
This 2 berth caravan is a perfect example of Thomson ingenuity in design and layout.

Only 9ft 8ins long, the Mini Glen still holds a dining area that converts into a double bed, a kitchenette complete with hotplate, grill and sink unit/drain, plus a full size wardrobe and toilet compartment.

And, incredibly, there's still more than enough room to move around in.



Available in "GL" series.



- A Griller/Hotplate
- B Sink
- C Toilet
- E Dinette Bed 72" x 48"
- I Wardrobe
- J Roof Locker
- K Roof Locker and Shelf
- M Table Position
- N Cabinet for Refrigerator
- P Shelf

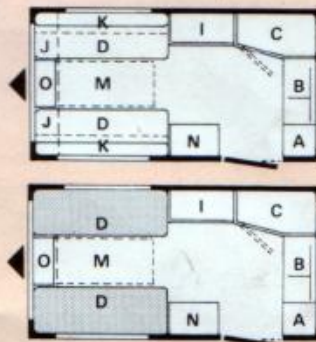
GLENDALE

This luxury caravan for two is one of the most popular of all the T-Line models. And not surprisingly.

Superbly fitted with teak-faced furniture, fitted carpets and rich, textured upholstery, with a spacious dining area that seats as many as six, the Glendale guarantees complete convenience and comfort wherever you go.



Available in "GL" series.



- A Griller/Hotplate
- B Sink
- C Toilet
- D Single Bed 72" x 26"
- E Double Bed 77" x 56"
- I Wardrobe
- J Roof Locker
- K Roof Locker and Shelf
- M Table Position
- N Cabinet for Refrigerator
- O Chest of Drawers

GLENNEVIS

Look inside this T-Line model and you'll see another fine example of comfort and commonsense perfectly combined.

Even with berths for up to 4 people, and centre toilet compartment, the Glennevis is still remarkably roomy, with smart upholstery, a stainless steel sink unit, teak pattern working surfaces, space for fridge, and loads of storage room.

All round, a great family caravan at a modest price.



Available in "S" series.



- A Griller/Hotplate
- B Sink
- C Toilet
- E Dinette Bed 77" x 46"
- F Single Bed Dinette 69" x 22" Hammock Above
- I Wardrobe
- J Roof Locker
- M Table Position
- N Cabinet for Refrigerator
- P Shelf

GLENELG

The practical and the comfortable have been sensibly combined in the Glenelg to allow the maximum of facilities without sacrificing all-important space.

With wipe-clean vinyl roof and wall panels, convenient end roof lockers and ample space for modern work units, not to mention everyone's belongings, the Glenelg is the perfect economy caravan for the whole family, with sleeping space for up to five.



Available in "GL" and "S" series.



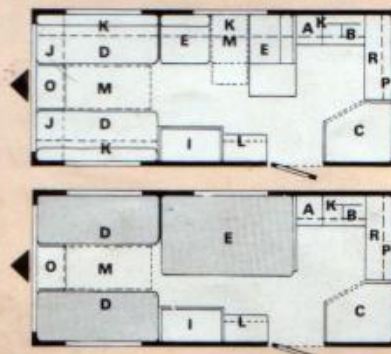
- A Griller/Hotplate
- B Sink
- C Toilet
- E Dinette Bed 77" x 46"
- F Single Bed 72" x 26" Pullman Bunk 69" x 22"
- I Wardrobe
- J Roof Locker
- M Table Position
- N Cabinet for Refrigerator
- P Shelf
- S Corner Seat (GL model)

GLENEAGLE

Give our designers more than 17ft of caravan to play with and you can be sure the result will be a bit special. And that's just what's happened with the Gleneagle, as refined a caravan as you'll find anywhere. Two single beds and a full size double bed come as standard, with the option of two Pullman bunks.

And with two tables, a full oven, a kingsize toilet compartment and even a cocktail cabinet, the Gleneagle bears more resemblance to a small home than a caravan.

Available in "GL" and "S" series.



- A Griller/Oven
- B Sink
- C Toilet
- D Single Bed 72" x 26"
- E Dinette Bed 72" x 44"
- I Wardrobe
- J Roof Locker
- K Roof Locker and Shelf
- L Cocktail Cabinet
- M Table Position
- O Chest of Drawers
- P Shelf
- R Cupboard

	MINI GLEN GL	GLENDAL GL	GLENNEVIS S	GLENELG S	GLENELG GL	GLENEAGLE S	GLENEAGLE GL
• Supplied. - Not Available.							
B & B Independent Suspension	•	•	•	•	•	•	•
Hi-Di Rust-Proofed Steel Chassis	•	•	•	•	•	•	•
Sigma Automatic "Back-up" Coupling	•	•	•	•	•	•	•
Courtell Insulation Throughout (including floor)	•	•	•	•	•	•	•
Gas Cylinder Chest Faring & Stoneguard	•	•	•	•	•	•	•
Rear Fog Lamps	•	•	•	•	•	•	•
3-Tone Pre-painted Aluminium Paneling	•	•	•	•	•	•	•
Plastics Rubbing Strakes	-	-	•	•	-	-	-
Heavy Duty Rubber Strakes	•	•	-	-	•	-	•
Awning Channel	•	•	•	•	•	•	•
Integral Frame Windows in Safety Glass	-	-	•	•	-	•	-
Acrylic Double Glazed Windows	•	•	-	-	•	-	•
Exterior Awning Light	•	•	-	-	•	-	•
Double Acrylic Roof Ventilator	•	•	-	-	•	-	•
Water Inlet and Waste Nozzles	•	•	•	•	•	•	•
Carver Fluid Heater and Thermostat	•	•	-	-	•	-	•
Space for Fluid Heater	-	-	•	•	-	•	-
Glass Fronted Oven	-	•	-	-	•	-	•
Space for Radford Oven	Fitted	-	•	•	-	Fitted	-
Refrigerator Fitted	1 cu ft	2 cu ft	-	-	2 cu ft	-	2 cu ft
Space for Refrigerator	-	-	1 cu ft	2 cu ft	-	2 cu ft	-
Carver Cascade Hot Water System (Optional)	-	•	-	-	-	-	•
Gas Lighting	1	1	1	1	1	1	1
12 volt Interior Lighting	2	3	2	2	3	3	4
Combined Sink/Hotplate in Stainless Steel	•	•	•	•	•	•	•
Electric Water Pump	•	•	•	•	•	•	•
Basic Sleeping Accommodation	2	2	4	4	4	4	4
Optional Extra Sleeping Accommodation	-	-	-	+1	+1	+2	+2
L Shaped Day Seat	-	-	-	-	•	-	-
5" deep Poly Foam Cushions	•	•	•	•	•	•	•
Velour Style Upholstery	•	•	-	-	•	-	•
Lancaster Cut Pile Carpeting	•	•	•	•	•	•	•
Luxury Lined Curtains	•	•	-	-	•	-	•
Scatter Cushions	2	2	-	-	4	-	4
Roller Blind at Kitchen	•	•	-	-	•	-	•
Washable Vinyl Paneling	•	•	•	•	•	•	•
Washbasin, Faucet and Light in Toilet	•	•	•	•	•	•	•
Vanity Cabinet in Toilet	•	•	-	-	•	-	•
Full Compliance with British Standards 4626 (1970)	•	•	•	•	•	•	•
Overall (shipping) length (including drawbar)	12'9" 3886 mm	16'0" 4876 mm	16'0" 4876 mm	17'9" 5409 mm	17'9" 5409 mm	20'9" 6324 mm	20'9" 6324 mm
Body Length	9'8" 2946 mm	12'10" 3911 mm	12'10" 3911 mm	14'6" 4419 mm	14'6" 4419 mm	17'6" 5334 mm	17'6" 5334 mm
Body width	6'11" 2108 mm	6'11" 2108 mm	6'11" 2108 mm	6'11" 2108 mm	6'11" 2108 mm	7'3" 2210 mm	7'3" 2210 mm
Overall height	7'6" 2285 mm	7'11" 2413 mm	7'11" 2413 mm	7'11" 2413 mm	7'11" 2413 mm	8'1" 2464 mm	8'1" 2464 mm
Delivered weight (tolerance 3%) (kg-cwts)	12 cwt 615 kg	14.5 cwt 740 kg	13.5 cwt 690 kg	14.5 cwt 740 kg	15.75 cwt 800 kg	19.00 cwt 960 kg	20.5 cwt 1040 kg
Maximum authorised gross weight (kg-cwts)	15 cwt 760 kg	17.5 cwt 890 kg	17 cwt 865 kg	17.5 cwt 890 kg	19 cwt 965 kg	25 cwt 1265 kg	25.5 cwt 1300 kg
Radial ply tyres & rim size	155 SR 13 LP 1207	155 SR 13(R) LP 1207	155 SR 13 LP 1207	155 SR 13 LP 1207	155 SR 13(R) LP 1207	185 SR 14(R) LP 993	185 SR 14(R) LP 993
Tyre pressures	34 psi	39 psi	34 psi	34 psi	39 psi	42 psi	42 psi
Recommended nose weight (without cylinders) lbs	80-90 lbs	110-140 lbs	100-120 lbs	100-120 lbs	100-120 lbs	150-180 lbs	150-180 lbs
Tow ball height (middle of ball, car laden)	14"	13"	13"	14"	14"	14"	14"

The issue of this brochure does not constitute an offer and sales are conditional upon terms of business and express warranty issued by the makers of the caravans.

While the information contained in this brochure is correct at September 1979 it may be that, on account of the use of alternative materials or the shortage of supplies, alterations may have to be made

to the caravans described in this brochure. Diagram and detailed specifications of each caravan are not to scale.

Particulars of any changes may be obtained from Thomsons (Carron) Limited, Carron, Falkirk, Scotland. Phone: Larbert (03245) 2202. Cables: Caravans, Falkirk. Caravan Manufacturers approved by National Caravan Council.

