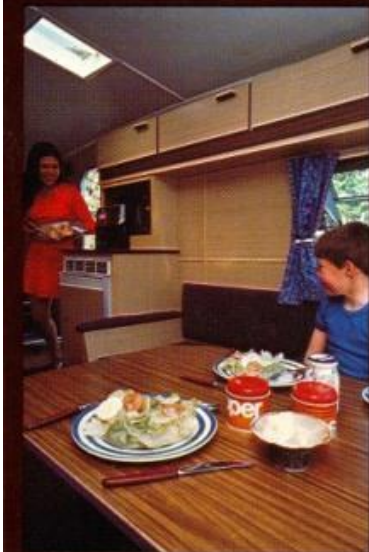


Thomson T·line Caravans





T-Line the freedom family

The T-Line story is a family story. For more than 60 years the Thomson family and their staff of craftsmen have been hand-building caravans in Scotland to travel all over the world. T-Line caravans are made for keen caravanners by keen caravanners.

This year there are 10 models to choose from, including the brand new luxury 2-berth Clansman – one of the most comprehensively equipped vans on the British market. The T-Line range is built to the highest standards of planning and comfort, and all models satisfy the British Standard specification for touring trailers. T-Line is safe, stylish, luxury trimmed. Designed for family freedom and geared for family comfort. In fact, a family story right down the line.

We take the woman's view, and to plan her holiday environment we got the help of the best experts around. Other women. Just the people to get the best out of space and fitting refinements. In T-Line caravans you'll find we've used their advice to maximise every inch and produce really tasteful

labour-saving interiors. New stainless steel sink unit and draining board, polyester finished teak pattern working surfaces and rich hard-wearing quilted upholstery to give the touch of real luxury.

We cater for kids, so we make T-Line tough. Tough enough to stand up to years of effortless towing, and tough enough for little boys too. Hard-wearing pile carpets and wipe-easy surfaces are more than ideal for a growing family. They're necessary. And Thomsons provide them in designs and colours to please the most discerning of mums.

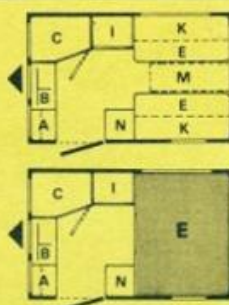
And T-Line is favourite with men. For a start, there's a Thomson at a price to suit every pocket. And whatever the model, the safety's the same right through the range, with rigid steel chassis, planned weight distribution, superb brakes, independent suspension and hydraulic damper couplings on every caravan to take the towing strain off you, and off your car. T-Line has style, with dashing lines. Heavy duty aluminium body panels finished in glossy acrylic enamel and mounted on hardwood framing. And, in an age of mass production, we still make them by hand. So T-Line vans are constructed to stand the strain of countless journeys. To last and not to cost, so you can measure your Thomson caravan's life in decades of wonderful touring.

We hope you will enjoy looking through our range for 1973. As you will discover when you buy a T-Line, we at Thomsons really go out of our way to back our fine vans with fine service. If you enjoy caravanning with kindred spirits, the Thomson Owners' Club, a friendly company of caravanners, who arrange all kinds of rallies and club activities, is waiting to welcome you. Care to join the family?

Mini Glen



See how T-Line ingenuity can pack, into 9ft. 5ins., a dining area that converts into a double-bed, a kitchenette complete with hot plate, grill and sink unit/drain. A full size wardrobe and toilet accommodation make this a Thomson baby to be reckoned with.

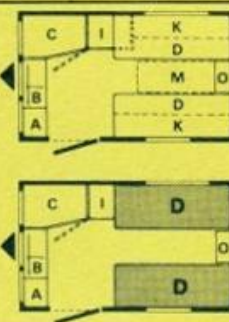


A Griller/Hotplate
B Sink
C Toilet
E Dinette Bed 73" x 46"
I Wardrobe
K Roof Locker and Shelf
N Table Position
N Cabinet

Glen 2



Twin beds here, convertible to a double whenever you want. Adjustable back rests, panoramic front window and custom-built chest of drawers/dining table mounting make this the small caravan with the big comfort. Just right for the 1,000 c.c. car.

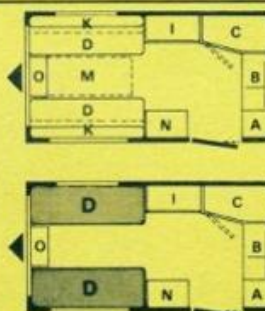


A Griller/Hotplate
B Sink
C Toilet
D Single Bed each 72" x 24"
I Wardrobe
K Roof Locker and Shelf
M Table Position
O Chest of Drawers

Glendale



A two-berther with an aura of luxury. This spacious 12 foot T-Line gives complete comfort for two. Polished ply-wood decor, fitted carpets and rich textured upholstery bring real luxury to your highway holiday. To say nothing of a dining area to seat 6.

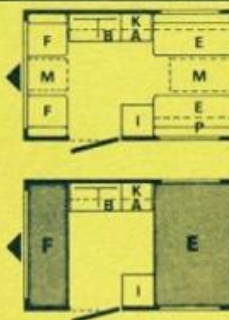


A Griller/Hotplate
B Sink
C Toilet
D Single Bed each 75" x 24"
I Wardrobe
K Roof Locker and Shelf
M Table Position
N Cabinet for Refrigerator
O Chest of Drawers

Glen 4



Modest in price but big in everything else, this is a 4-berth T-Line caravan that combines two separate living/sleeping areas divided by a fully-fitted kitchen, wardrobe and partition curtain. Pound for pound an outright winner in the budget class.

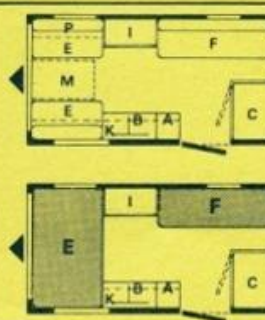


A Griller/Hotplate
B Sink
E Dinette Bed 73" x 46"
F Single Bed 72" x 24",
Hammock Above 69" x 22"
I Wardrobe
K Roof Locker and Shelf
M Table Position
P Shelf

Glennevis



We go out of our way with every Thomson T-Line caravan to keep everything out of yours. And the Glennevis is no exception. Compact, labour-saving, this is the optional 5-berther that offers a sparkling stainless steel sink unit, glowing new upholstery, teak pattern working surfaces, and a whole host of refinements for 1973.



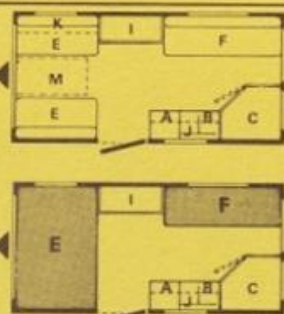
A Griller/Hotplate
B Sink
C Toilet
E Dinette Bed 73" x 46"
F Single Bed 72" x 24",
Bunk Above 69" x 22"
I Wardrobe
K Roof Locker and Shelf
M Table Position
P Shelf

Layout plans not to scale

Glenelg



No prizes for guessing why this is the T-Line top seller. Interior planning at its T-Line best has made this a real favourite. Wipe clean vinyl-coated roof panels, modern work units, and roomy end roof lockers are just some of the features that make the Glenelg outstanding value for this and any other family holiday.

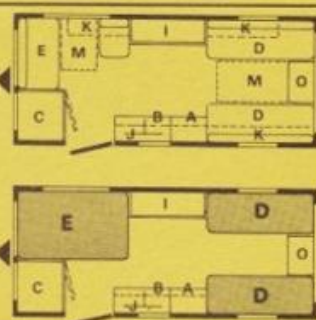


- A Griller/Hotplate
- B Sink
- C Toilet
- E Dinette Bed 73" x 46"
- F Single Bed 72" x 24", Bunk Above 69" x 22"
- I Wardrobe
- J Roof Locker
- K Roof Locker and Shelf
- M Table Position

Glenalmond



The T-Line to sleep 4, 5 or even 6 in all the comfort you could ever want. And that big, big window in the rear end dinette gives caravanners a tremendous outlook for 1973.

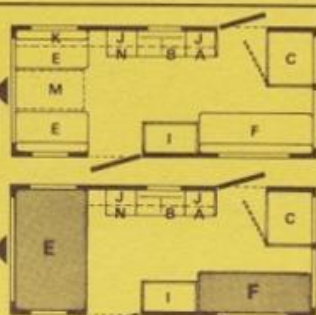


- A Griller/Hotplate
- B Sink
- C Toilet
- D Single Bed each 72" x 24"
- E Dinette Bed 73" x 46"
- I Wardrobe
- J Roof Locker
- K Roof Locker and Shelf
- M Table Position
- O Chest of Drawers

Glenmore

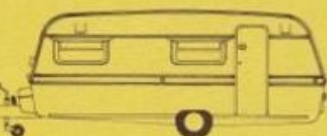


2 large doors give the 4 occupants real freedom of movement with ample space to spare for an optional fifth. Wardrobe and kitchen space is on the grand scale. The two-door feature makes the Glenmore an ideal choice for holidays at home or abroad.

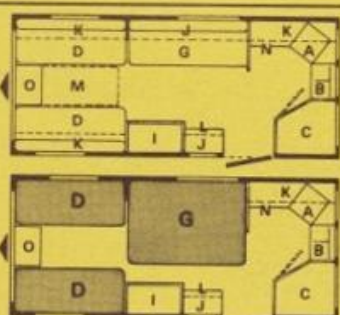


- A Griller/Hotplate
- B Sink
- C Toilet
- E Dinette Bed 73" x 46"
- F Single Bed 72" x 24", Bunk Above 69" x 22"
- I Wardrobe
- J Roof Locker
- K Roof Locker and Shelf
- M Table Position
- N Cabinet for Refrigerator

Gleneagle

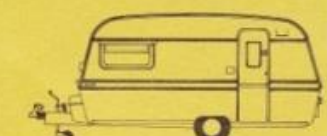


For the ultimate in highway holiday comfort, Thomsons took 17 feet of caravan and carried fitting refinements just as far as they could go. 2 single beds and a full size double-bed come as standard and, in addition, two Pullman bunks can be supplied. Full oven cooker is part of the standard specification.

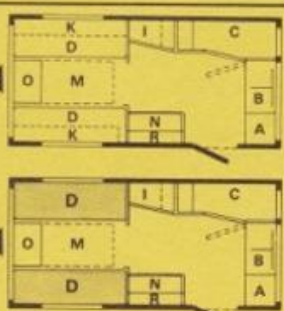


- A Full Oven Cooker
- B Sink
- C Toilet
- D Single Bed each 72" x 24"
- G Settee Bed 72" x 46"
- I Wardrobe
- J Roof Locker
- K Roof Locker and Shelf
- L Sideboard
- M Table Position
- N Cabinet for Refrigerator
- O Chest of Drawers

Clansman

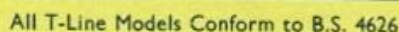


Brand new for 1973, this super luxury model is for those who want, and get, comfort extraordinary. Just look at the standard specification - cocktail cabinet, big 2 cu.ft. fridge, lined toilet compartment with vanity unit and water supply, and a full oven cooker. Exclusive to Clansman is sumptuous upholstery in man-made tweed with matching furnishings and a deep pile carpet.



- A Full Oven Cooker
- B Stainless Steel Sink with Foot Pump and Faucet
- C Lined Toilet Compartment with Vanity Unit
- D Single Bed N/S 75" x 24" O/S 72" x 24"
- I Wardrobe
- K Roof Locker with Shelf
- M Table Position
- N 2 cu. ft. Refrigerator
- O Chest of Drawers
- R Cocktail Cabinet

Layout plans not to scale

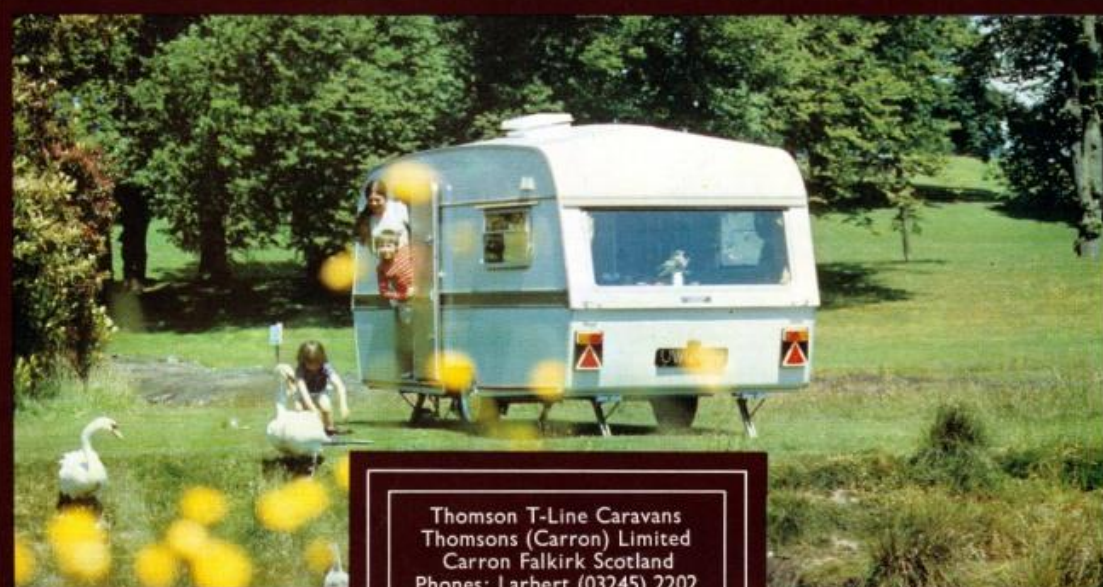


While the information contained in this brochure is correct at September, 1972, it may be that, on account of the use of alternative materials or the shortage of supplies, alterations may have to be made to the caravans described in this brochure.

Thomsons (Carron) Ltd. are Caravan Manufacturers approved by the National Caravan Council.

T-LINE PLUS POINTS	Mini-Glen	Glen 2-Berth	Glen 4-Berth	Glendale 2-Berth	Glennavis	Glenisg	Clansman 2-Berth	Glenalmond	Glenmore	Glenaeagle
B & B Independent Suspension	○	○	○	○	○	○	○	○	○	○
Full Frame channel steel chassis	○	○	○	○	○	○	○	○	○	○
Hydraulic damper coupling	○	○	○	○	○	○	○	○	○	○
Fully retractable telescopic Jockey wheel	○	○	○	○	○	○	○	○	○	○
Gas cylinder carrier	○	○	○	○	○	○	○	○	○	○
Gas cylinder chest	○	○	○	○	○	○	○	○	○	○
Complete drawbar fairing	○	○	○	○	○	○	○	○	○	○
Full road lighting	○	○	○	○	○	○	○	○	○	○
7-Pin Electrical connector and socket	○	○	○	○	○	○	○	○	○	○
Full length rubbing strakes	○	○	○	○	○	○	○	○	○	○
Awning channel	○	○	○	○	○	○	○	○	○	○
High gloss pre-painted aluminium panelling	○	○	○	○	○	○	○	○	○	○
Embossed metal stoneguard	○	○	○	○	○	○	○	○	○	○
Anodised aluminium mouldings	○	○	○	○	○	○	○	○	○	○
Hardwood framing	○	○	○	○	○	○	○	○	○	○
Polyurethane finished plywood panelling	○	○	○	○	○	○	○	○	○	○
Mineral wool insulation - 1" thick	○	○	○	○	○	○	○	○	○	○
Piano hinges on all partitions	○	○	○	○	○	○	○	○	○	○
Internal fluorescent lighting	○ (1)	○ (1)	○ (1)	○ (1)	○ (1)	○ (1)	○ (4)	○ (2)	○ (2)	○ (2)
Full gas lighting	○ (1)	○ (1)	○ (1)	○ (2)	○ (2)	○ (2)	○ (2)	○ (2)	○ (2)	○ (2)
Adjustable back rests on single beds		○		○			○	○		○
Water inlet and waste pipe nozzles	○	○	○	○	○	○	○	○	○	○
Stainless steel sink and drainer	○	○	○	○	○	○	○	○	○	○
Foot pump	○	○	○	○	○	○	○	○	○	○
Tuckaway water faucet	○	○	○	○	○	○	○	○	○	○
Integral frame windows with vent panels	○	○	○	○	○	○	○	○	○	○
Space for optional full oven cooker	○	○	○	○	○	○	Fitted	○	○	Fitted
Space for optional 1 cu. ft. refrigerator	○	○	○	○	○	○	2 cu.ft. fitted	○	○	○
Quilted mattresses of 5" deep polyfoam	○	○	○	○	○	○	○	○	○	○
Deep pile carpet with foam underlay	○	○	○	○	○	○	○	○	○	○
Gas supply point	○	○	○	○	○	○	○	○	○	○
Stressed frame stable door with weatherseal	○	○	○	○	○	○	○	○	○	○
Extra large roof and end lockers	○	○	○	○	○	○	○	○	○	○
Bottle stowage and crockery rack	○	○	○	○	○	○	○	○	○	○
Washable vinyl-faced roof panels	○	○	○	○	○	○	○	○	○	○
Full compliance with British Standard 4626 (1970) for touring caravans	○	○	○	○	○	○	○	○	○	○
Overall (shipping) Length (including drawbar)	12'5" 3785mm.	14' 4265mm.	14' 4265mm.	16'3" 4950mm.	16'3" 4950mm.	17'3" 5260mm.	17'3" 5260mm.	19' 5790mm.	19' 5790mm.	20'9" 6325mm.
Body length	9'7" 2920mm.	10'9" 3275mm.	10'9" 3275mm.	12'8" 3860mm.	12'8" 3860mm.	13'9" 4190mm.	13'9" 4190mm.	15'7" 4750mm.	15'7" 4750mm.	17'4" 5285mm.
Body Width	6'5" 1956mm.	6'6" 1981mm.	6'6" 1981mm.	6'9" 2057mm.	6'9" 2057mm.	6'9" 2057mm.	6'9" 2057mm.	6'9" 2057mm.	6'9" 2057mm.	7'3" 2210mm.
Body height	7'7" 2310mm.	7'8" 2340mm.	7'8" 2340mm.	7'10" 2390mm.	7'10" 2390mm.	7'11" 2410mm.	7'11" 2410mm.	8'1" 2464mm.	8'1" 2464mm.	8'1" 2464mm.
Delivered weight (Tolerances 3%)	9½ cwt.s. 470 kg.	10½ cwt.s. 530 kg.	10½ cwt.s. 520 kg.	12½ cwt.s. 635 kg.	12½ cwt.s. 635 kg.	12½ cwt.s. 650 kg.	16 cwt.s. 810 kg.	14½ cwt.s. 750 kg.	14½ cwt.s. 750 kg.	18 cwt.s. 915 kg.
Maximum authorised gross weight	12 cwt.s. 610 kg.	13½ cwt.s. 685 kg.	13½ cwt.s. 685 kg.	16½ cwt.s. 825 kg.	16½ cwt.s. 825 kg.	16½ cwt.s. 850 kg.	20 cwt.s. 1015 kg.	20½ cwt.s. 1030 kg.	20½ cwt.s. 1030 kg.	23 cwt.s. 1170 kg.
Tyre size	5.20x13	5.20x13	5.20x13	5.90x13	5.90x13	5.90x13	5.90x13 (6 ply)	6.40x15	6.40x15	6.40x15 (6 ply)
Tow ball height (middle of ball, car laden)	15" 381mm.	15" 381mm.	15" 381mm.	15" 381mm.	15" 381mm.	15" 381mm.	15" 381mm.	15" 381mm.	15" 381mm.	16" 406mm.





Thomson T-Line Caravans
 Thomsons (Carron) Limited
 Carron Falkirk Scotland
 Phones: Larbert (03245) 2202
 Cables: Caravans, Falkirk

PRICE LIST

(Applicable from 1st May, 1973).

RECOMMENDED RETAIL PRICES
EX WORKS

SEASON 1973

Supersedes all previous Price Lists

MODEL		LENGTH	BERTHS	DELIVERED WEIGHT	RECOMMENDED EX-WORKS PRICE (incl. VAT)
Mini Glen 2	M2	9'7"	2	9½ cwts	£533-50
Glen 2	G2	10'9"	2	10½ cwts	£599-50
Glendale	GD	12'8"	2	12½ cwts	£665-50
Clansman	C	13'9"	2	16 cwts	£1,012-00
Glen 4	G4	10'9"	4	10½ cwts	£544-50
Glennevis	GN	12'8"	4(5)	12½ cwts	£660-00
Glenelg	GG	13'9"	4(5)	12½ cwts	£698-50
Glenalmond	GA	15'7"	4(6)	14½ cwts	£770-00
Glenmore	GM	15'7"	4(5)	14½ cwts	£770-00
Gleneagle	GE	17'4"	4(6)	18 cwts	£902-00

THE FOLLOWING TABLE OUTLINES THE COMPLETE RANGE OF FACTORY FITTED OPTIONAL EXTRAS WHICH CAN BE INSTALLED ON REQUEST. PLEASE CONSULT YOUR DEALER FOR FULLER DETAILS AND PRICES

FACTORY FITTED OPTION	M2	G2	GD	C	G4	GN	GG	GA	GM	GE
Flued Gas Heater	N.A.	X	X	X	X	X	X	X	X	X
Floor Insulation (25mm polystyrene)	X	X	X	S	X	X	X	X	X	X
Oven Cooker (in lieu of Hotplate)	X	X	X	S	X	X	X	X	X	S
1 Cubic Foot Refrigerator	X	X	X	N.A.	X	X	X	X	X	X
2 Cubic Foot Refrigerator	N.A.	N.A.	N.A.	S	N.A.	N.A.	X	X	X	X
Chest of Drawers	N.A.	S	S	S	N.A.	X	X	S	X	S
Pullman Type Bunk	N.A.	N.A.	N.A.	N.A.	N.A.	N.A.	N.A.	X	N.A.	X
Pull-out Double Bed Conversion	N.A.	N.A.	N.A.	N.A.	N.A.	X	X	N.A.	X	N.A.
Stainless Steel Sink	S	S	S	S	X	S	S	S	S	S
Rear End Table 20"X25"	N.A.	N.A.	N.A.	N.A.	N.A.	X	X	N.A.	X	N.A.

"X" - Available

"N.A." - Not Available

"S" - Fitted as Standard

ADDITIONALLY: OCCASIONAL SQUAB CUSHIONS (18"X8"X5") AND SCATTER CUSHIONS MATCHING UPHOLSTERY AND CURTAINS RESPECTIVELY ARE AVAILABLE FROM YOUR DEALER

Thomson **ELINE** Caravans

Thomsons (Carron) Limited

CARRON : FALKIRK FK2 8ED : SCOTLAND

Telephone: Larbert (03245) 2202

5/73/15m

When visiting your T-Line Dealer.....
use this Check List to select the particular T-Line model which best suits your family's needs, for instance,
in size, layout, cost.

Remember—even where other manufacturers can offer some of these features, they may not be standard
throughout their range and could possibly involve extra charges on the listed Price.

FEATURE	THOMSON	MAKE A	MAKE B	MAKE C
1. Meranti Hardwood Framing throughout	X			
2. Tongued and grooved House Type Flooring	X			
3. 1" Thick Mineral Wool Insulation	X			
4. Hardwood Rubbing Strakes	X			
5. Piano Hinges on furniture	X			
6. Fitted stoneguard	X			
7. Positive catches on all doors	X			
8. Deep pile carpet with foam underlay	X			
9. Quilted 5" deep polyfoam mattresses	X			
10. Stainless steel sink and drainer (Except G4)	X			
11. 12 volt Flourescent Lighting	X			
12. Fitted Gas Point	X			
13. Inlet and Outlet Water Nozzles	X			
14. Foot operated Water Pump and Faucet	X			
15. Fitted Plate Rack	X			
16. Crockery Holder	X			
17. Refrigerator Type Door Liner	X			
18. 7-Pin Plug & Socket supplied	X			
19. Full Drawbar Fairing	X			
20. Hub Caps & Rim Embellishers	X			
21. Stable Door	X			
22. Lee Board on Upper Bunk(s)	X			
23. Streamlined Gas Cylinder Chest (Except M2, G4 & G2)	X			
24. Delivered Weight	Cwts	Cwts	Cwts	Cwts
25. Available Carrying Capacity for Personal Effects	Cwts	Cwts	Cwts	Cwts
26. Full Compliance with British Standard BS 4626 (1970)	X			

**REMEMBER—WITH OTHER CARAVANS THESE DE LUXE FEATURES MAY COST EXTRA BUT WITH T-LINE
THEY COME AT THE LISTED PRICE. IT'S VALUE FOR MONEY THAT COUNTS.**

Thomson T-Line Caravans

Thomson (Caravan) Limited
CARAVAN & CARRIAGE BUILDERS
GLASGOW & DUNDEE